

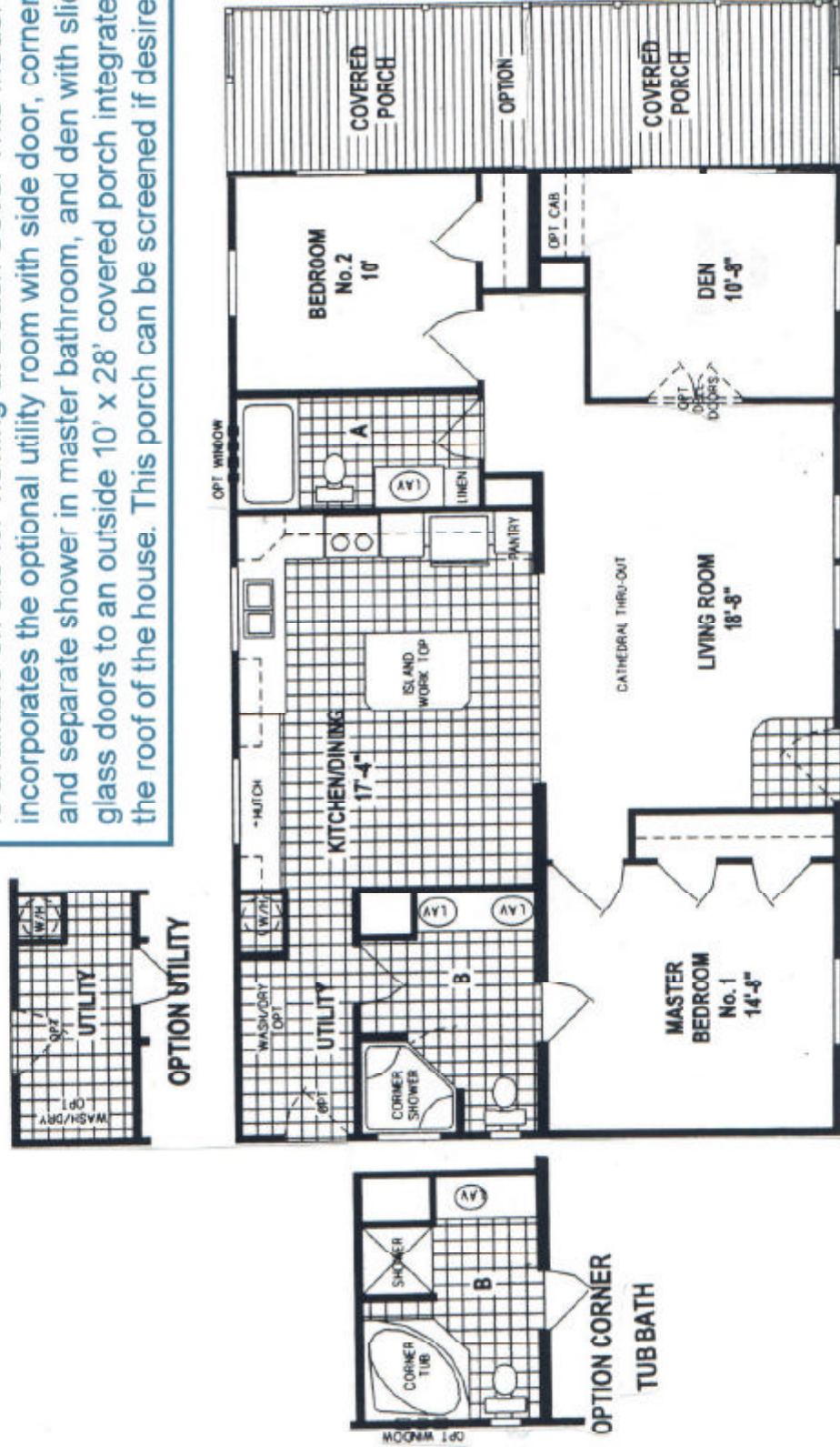


Beach Cove | KEY LARGO
3/2 Bedrooms – 2 Bath

Model: KL-270-P
1,173 Square Feet
Dimensions: 44 x 28

Note: Any floor plan can be flipped and/or reversed if you prefer that layout instead.

OUR MODEL HOME: This home (in a reversed floor plan) is available on-site for viewing at Beach Cove. This model home incorporates the optional utility room with side door, corner tub bath and separate shower in master bathroom, and den with sliding glass doors to an outside 10' x 28' covered porch integrated into the roof of the house. This porch can be screened if desired.



Beach Cove reserves the right to change colors, prices, specifics, models, dimensions and materials without notice. Rendering and diagrams are meant to be representative and, in keeping with Beach Cove's policy of constant updating and improvement, may vary from the actual home. All dimensions are nominal and approximated. Square footage is measured from exterior wall to exterior wall and is an approximate figure. Length indicated in floor plans is floor length only. **PRICES AND SPECIFICATIONS ARE SUBJECT TO CHANGE WITHOUT NOTICE OR OBLIGATION.**